



KONICA MINOLTA

Convenience, Simplicity and Security for users of Konica Minolta devices

Equitrac Integrated for Konica Minolta puts convenient and secure release of prints - as well as complete tracking of copies, scans and faxes - at your fingertips, in the touch screen control panel of your Konica Minolta multi-function product (MFP).

Part of the Equitrac Office® and Equitrac Express® solutions, Equitrac Integrated for Konica Minolta takes full advantage of the customization capabilities in Konica Minolta products widely deployed in enterprise, general office, and education environments. This means now you can enhance document security, protect personal information and provide users the mobility and convenience of Follow-You® Printing with no terminals to purchase, install or maintain.

Extend your Total Print Management strategy to walkup services

- Simplify tracking and management of copies, scans and faxes.
- Promote user mobility, convenience and productivity.
- Enhance security of printed documents released on networked Konica Minolta MFPs.
- Manage total output volumes and eliminate waste.

Saving time, increase productivity.

Follow-You Printing with Secure Document Release increases mobility and productivity by freeing users to output documents at the Konica Minolta MFP of their choice - across servers, departments and even geographic boundaries. Freed from reliance on a single printer, users can output documents when and where they are needed and avoid the inconvenience of printers that are busy or out of service.

For added convenience, network login or ID entry on the device provides users instant authentication to access the full power of the Konica Minolta MFP without having to continually re-enter credentials for their allowed copying, scanning, faxing or email services.

Increase security, confidentiality and compliance.

With the Konica Minolta MFP providing access to Follow-You Printing, it's easy to keep confidential materials out of the wrong hands. Jobs can only be printed by the appropriate user when they are physically at the device to release. And by accounting for and reporting all document output activity, Follow-You Printing helps organizations comply with HIPAA, Sarbanes-Oxley and other privacy requirements.

Simplify and centralize print management.

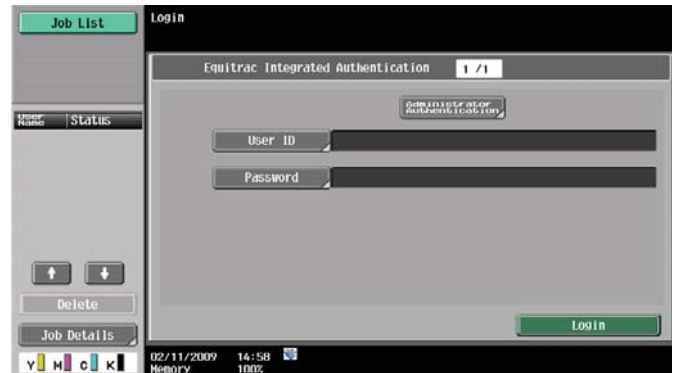
Equitrac's server-based solution requires no user desktop software. Fully standards-based, Follow-You Printing is compatible with IPSec encryption and supports alpha-numeric login, PIN entry, and magnetic stripe or proximity card authentication. With terminal-based solutions for your non-Konica Minolta equipment and a single convenient administrative interface for managing your entire fleet, only Equitrac software brings the security of Follow-You Printing to multi-vendor environments.





With the Follow-You Printing option, print jobs are held in a secure queue on the network print server and are not released to the MFP until the user is at the device and releases the job. The user can review a list of waiting documents and select only the jobs that are required by pressing the Print button.

When Users first walks up to the MFP, they are required to enter valid authentication information to unlock the MFP. Users can enter a User code, and password.



Features Overview

Cost Management

- Fully integrated with Equitrac Office cost management solutions and Equitrac Express pay-for print/copy solutions
- Copy, scan and fax tracking captures all document activity
- Eliminates unauthorized printing and the waste of uncollected print jobs

Ease of use

- Simple, familiar, touch screen on Konica Minolta device
- Single integrated user experience simplifies workflow, increases user satisfaction
- On-screen soft keyboard

Security

- Follow-You Printing for mobile and secure document release
- Documents output only when users are ready to pick them up from the MFP
- Network login or PIN authentication and access control

IT Simplification

- No terminals for IT to install or support
- No additional IP addresses or network drops
- Centralizes device management and control
- Reduces printer-related help desk calls
- Offline support allows limited MFP use in case of network outage

Device Compatibility

For a list of the latest Konica Minolta supported devices, please visit <http://www.equitrac.com/devices/konicaminolta.asp>.